



DREAM CARAVAN



CRUSADER 2025 *STANDOUT*

MUSKETEER

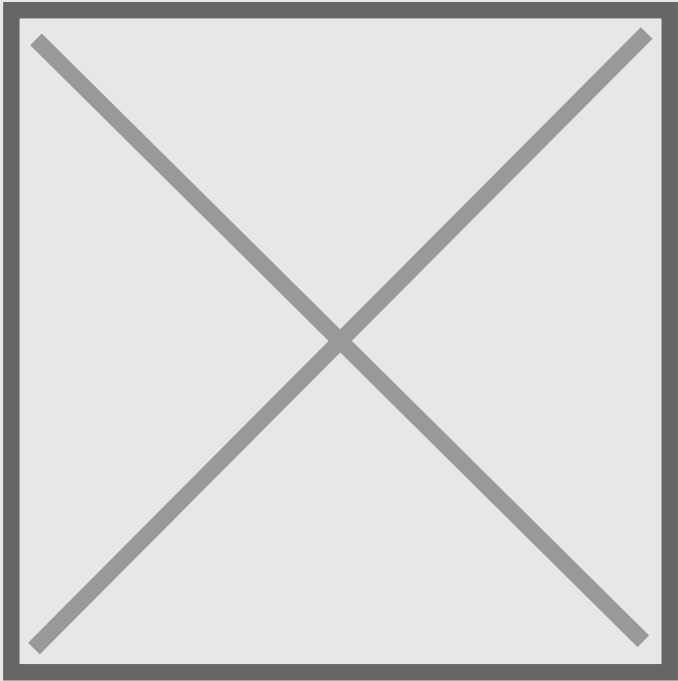
UNPARALLELED VERSATILITY

www.crusadercaravans.com.au

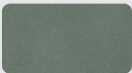




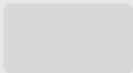
DREAM CARAVAN



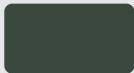
Boutic Light Grey



Pelle Greenstone



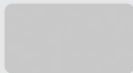
NX633 Lana Grey Matt



NX637 Forest Green Matt



Sforza Mata Oak



NX644 Metallic Pewter Matt

MUSKETEER EMPRESS

SELECTED OPTIONAL BUNDLES	
BLACK PACK UPGRADE BUNDLE	\$0.00
SELECTED OPTIONAL UPGRADES	

PRICE BREAKDOWN

Base price	\$106,390.00
Upgrade options	\$0.00
<hr/>	
Estimated total build price	\$106,390.00

RRP Prices shown are indicative only and may vary depending on specific bundles and options selected. Please contact your local dealer for an accurate quote. The caravan configuration tool is intended for informational purposes only and may not reflect all available options or potential customisations. Please consult with your local dealer to discuss your specific needs and preferences. RRP including all costs except State Registration. RRP Pricing is correct as at the date of publication and it is subject to change. All prices listed are in Australian dollars and are applicable to purchases within Australia. For international inquiries or purchases, please contact your local Crusader Caravans distributor.



MUSKETEER

UNPARALLELED VERSATILITY

Inspired by our customers' desire for both style and practicality.

The Musketeer range offers premium designs with exceptional comfort, flexibility, and a luxurious living space. With independent off-road suspension, it delivers smooth handling on various terrains, combining practicality with outstanding functionality.



Australian
Made



Full
Composite



Thermal
Efficient



Stylish
Interiors



Diverse Range
of Layouts



Musketeer Empress interior shown



Musketeer Empress interior shown

"Thank you Crusader people for our beautiful Musketeer Treville. Not only do we love our product, we appreciate the time you took to continually update us along the way, answer our questions promptly, and for still happily assisting us with our queries as we become familiar with our new van. No rushing us through handover either, which some people experience with other dealerships."

Debbie Mackie - Crusader Musketeer owner



WINNER MANUFACTURER OF THE YEAR



FLOORPLAN KEY ELEMENTS



Oven, Cooktop
& Rangehood



Fridge



Steps
Main Door



Wardrobe



Washing
Machine

*Indicative lengths and weights are for standard configuration, any additional options or variations will increase weights. Weights are approximate only and can vary between individual caravans. The Compliance Plate specifies the accurate weight for each respective caravan. Alterations to designated ATM may be requested at the time of order provided it does not exceed the legal maximum and is subject to the final tare weight. Floor length is the external total length of the caravan's floor. Overall width is measured externally and includes all protruding fixtures.

STANDARD FEATURES

Discover the standard features that define the Musketeer range, showcasing key specifications and standout qualities.

MUSKETEER

CHASSIS & BUILD

APPLIANCES

DOORS

ELECTRICAL

EXTERNAL

MISCELLANEOUS

WATER & GAS

UPHOLSTERY

Disclaimer: Crusader Caravans reserve the right to alter specifications without notice. Specifications may vary subject to availability and E&OE (Errors & Omissions Excepted). Images shown are for representation purposes only.

www.crusadercaravans.com.au



MY25V1 07/08/2025