



# DREAM CARAVAN



CRUSADER 2025  
**STANDOUT**

---

## **Xcountry**

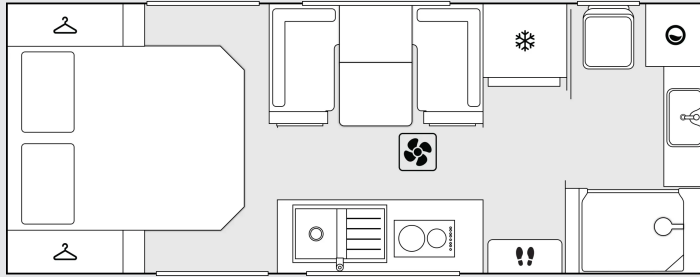
**OFF-ROAD LUXURY** & PERFORMANCE REDEFINED

[www.crusadercaravans.com.au](http://www.crusadercaravans.com.au)

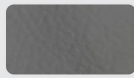




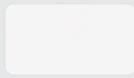
# DREAM CARAVAN



Boutic Light Grey



Ambassador Leather Cadet



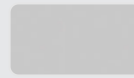
NX620V Artic White Matt



NX622 Slate Matt



Ausflex Aged Oak



NX644 Metallic Pewter Matt

## XCOUNTRY TRAILBREAKER

### SELECTED OPTIONAL BUNDLES

Black Pack Upgrade Bundle \$0.00

### SELECTED OPTIONAL UPGRADES

### PRICE BREAKDOWN

Base price	\$163,903.00
Upgrade options	\$0.00
<hr/>	
Estimated total build price	\$163,903.00

RRP Prices shown are indicative only and may vary depending on specific bundles and options selected. Please contact your local dealer for an accurate quote. The caravan configuration tool is intended for informational purposes only and may not reflect all available options or potential customisations. Please consult with your local dealer to discuss your specific needs and preferences. RRP including all costs except State Registration. RRP Pricing is correct as at the date of publication and it is subject to change. All prices listed are in Australian dollars and are applicable to purchases within Australia. For international inquiries or purchases, please contact your local Crusader Caravans distributor.



# XCOUNTRY

## OFF-ROAD LUXURY & PERFORMANCE REDEFINED

### A rugged, luxurious getaway caravan for extended off-grid adventures

Designed and built in Australia with the off-road smarts and rugged construction you need, the XCountry range integrates luxurious interiors with high-performance suspension, Victron battery management system and advanced solar capabilities. Enjoy extended off-road adventures in opulence and exceptional comfort.



Australian Made



Off-Road Luxury



Airbag Suspension



Full Composite



Victron Powered



XCountry Extreme interior shown



XCountry Trailbreaker interior shown

"Absolutely the finest caravan on the market. When you look at others around the same price range there are so many quality features that stand out on a Crusader Caravan. They are built with love and built to last and once you've had one you won't want anything else".

Dean Rogers - Crusader XCountry owner



# WINNER MANUFACTURER OF THE YEAR



## FLOORPLAN KEY ELEMENTS

---



Oven, Cooktop  
& Rangehood



Fridge



Steps  
Main Door



Wardrobe



Washing  
Machine

\*Indicative lengths and weights are for standard configuration, any additional options or variations will increase weights. Weights are approximate only and can vary between individual caravans. The Compliance Plate specifies the accurate weight for each respective caravan. Alterations to designated ATM may be requested at the time of order provided it does not exceed the legal maximum and is subject to the final tare weight. Floor length is the external total length of the caravan's floor. Overall width is measured externally and includes all protruding fixtures. Images shown are for representation purposes only

# STANDARD FEATURES



Discover the standard features that define the XCountry range, showcasing key specifications and standout qualities.

CHASSIS & BUILD

APPLIANCES

DOORS

ELECTRICAL

EXTERNAL

MISCELLANEOUS

WATER & GAS

UPHOLSTERY

Disclaimer: Crusader Caravans reserve the right to alter specifications without notice. Specifications may vary subject to availability and E&OE (Errors & Omissions Excepted). Images shown are for representation purposes only.

[www.crusadercaravans.com.au](http://www.crusadercaravans.com.au)



MY25V1 16/05/2026